



COLORADO STROKE ALLIANCE

May 20, 2011 update

www.coloradostroke.org

slide
1

This is sponsored by the Cancer, Cardiovascular Disease and Pulmonary Disease Grants Program
at the Colorado Department of Public Health and Environment.

If you are using the conference call option, please “mute” your phone.

Please do not put your phone on “hold” during the meeting.

Thank you.

CSA Update

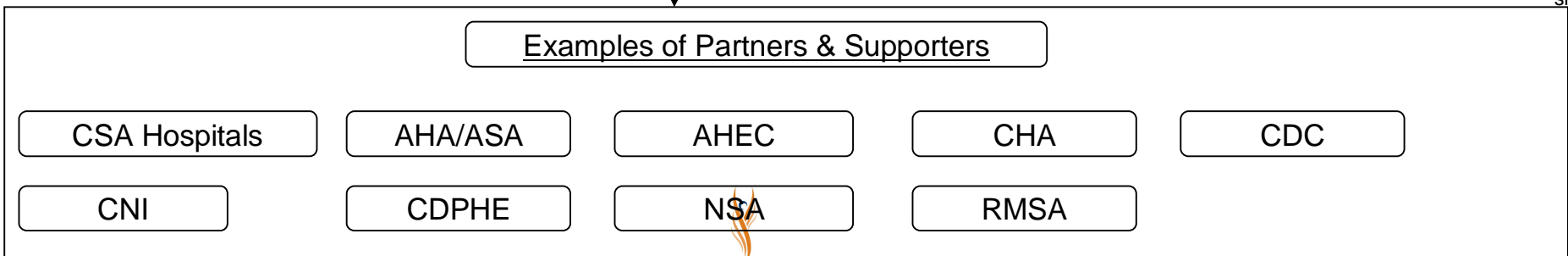
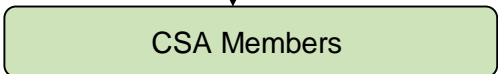
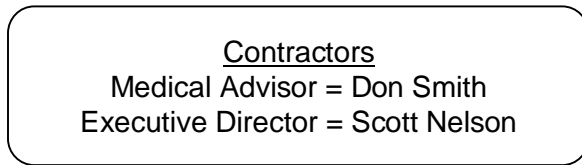
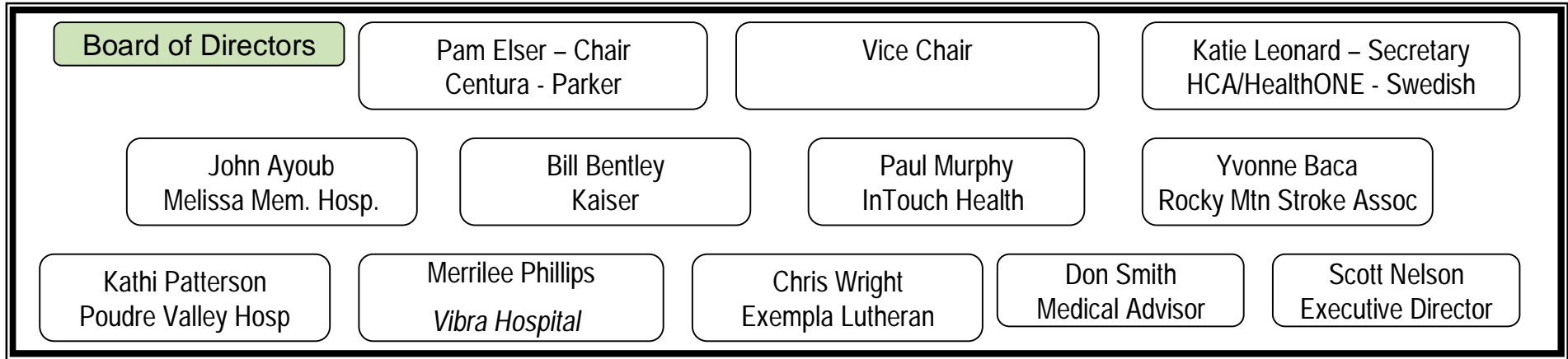
- CCPD Funding (CDPHE Grant)
 - July 2010 to June 2011
 - \$149,000
 - The Grant Renewal Application was submitted and accepted March 4, 2011
 - Final recommendations will be made public May 19, 2011
- CDPHE Progress Report
 - Q1 report submitted October 15, 2010
 - Q2 report submitted January 15, 2011
 - Q3 report submitted April 15, 2011,
 - Q4 report due July 2011
- Continue to explore funding options

Current Operations

July 2010-June 2011

CSA Organizational Chart March 2011

Max13
Min7



Site Visits

- 1 per year
- Deliver GWTG payments
 - CAH: \$525 Basic/JC: \$725
 - ***NOTE: GWTG Fee increase 1-1-2011***
- Review trend reports
- General update on CSA Operations
- CSA publications

Mentoring

- CSA Mentor meeting
 - After CSA meeting
 - 3rd Friday every other month, 915 – 1015 AM
- Rural mentor meeting
 - After CSA mentor meeting
 - 3rd Friday every other month 1015 – 1045 AM
- Next mentor and rural mentor meeting
 - Friday July 15, 2011 (location TBD)
- Next CSA meeting
 - Friday July 15, 2011 from 7:30-9 AM (location TBD)

Data Committee

- Meet once a month (as needed)
- Review CSA data
- Discuss potential projects

Papers/publications

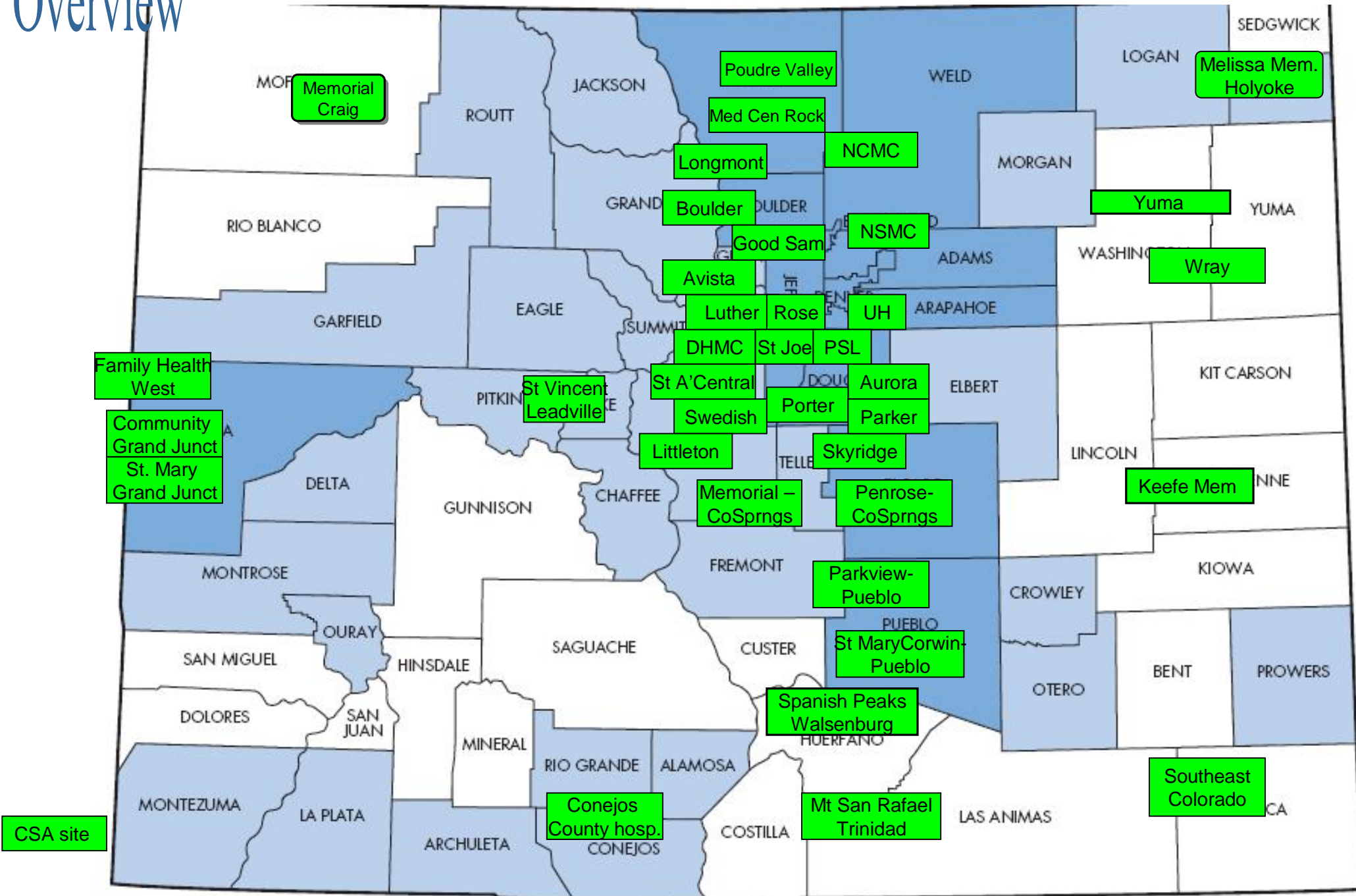
- Publications

- Dr Cumbler In-house stroke project
 - Accepted for publication in *Stroke*
 - Published in December 2010

- CSA JNN follow-up paper
 - Edits in progress
 - Revision submitted and accepted in December 2010
 - Publication date pending

- MCS Healthcare Public Relations
 - Contacted CSA to explore potential article on CSA success with statewide efforts
 - Planning in progress
 - Possible publications: *HealthCare Executive, Hospitals and Health Networks and Health Leaders*

Overview



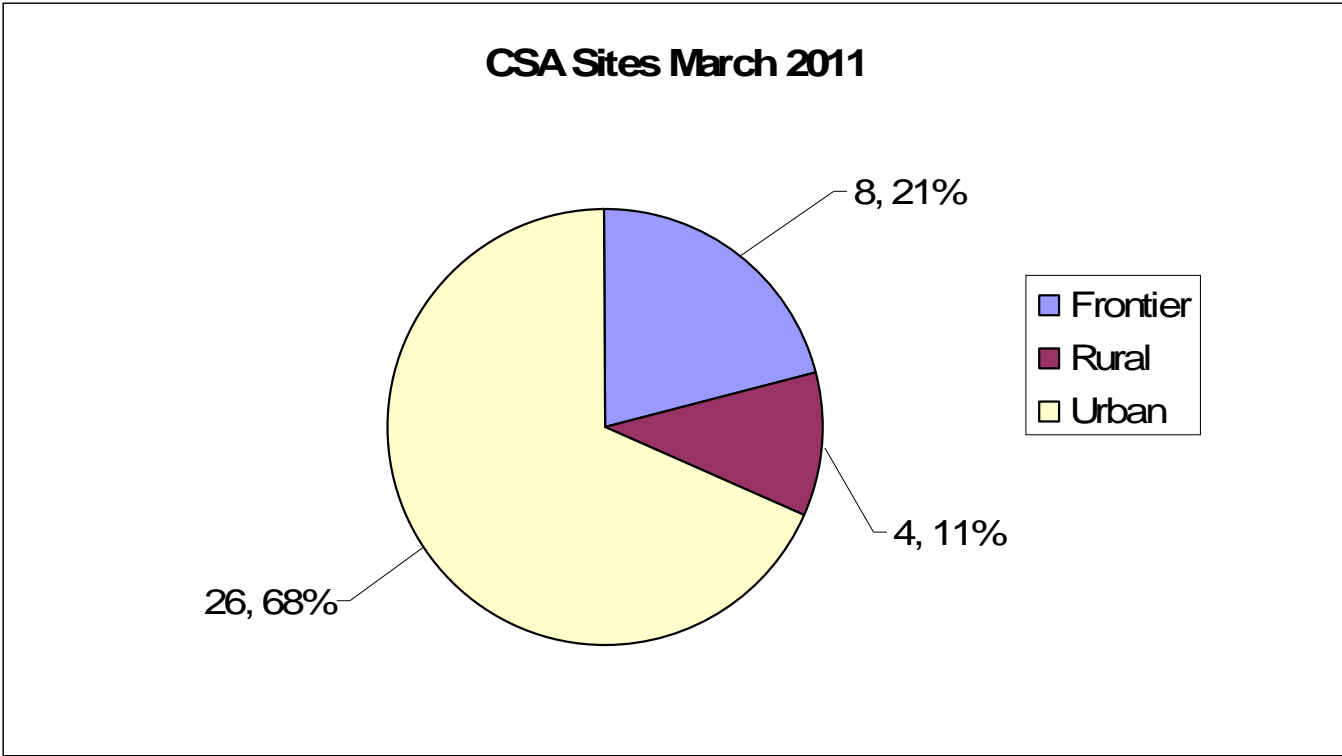
This map is only an approximation and is not to scale

38 CSA Sites March 2011

Hospital	Geographics	Hospital	Geographics
Avista Adventist Hospital	Urban	Parker Adventist Hospital	Urban
Boulder Community Hospital	Urban	Parkview Medical Center	Urban
Community Hospital	Urban	Penrose St Francis Hospital	Urban
Conejos County Hospital	Rural	Porter Adventist Hospital	Urban
Denver Health	Urban	Poudre Valley Hospital	Urban
Exempla Good Samaritan Medical Center	Urban	Presbyterian/St. Luke's Medical Center	Urban
Exempla Lutheran Medical Center	Urban	Rose Medical Center	Urban
Exempla St Joseph's Hospital	Urban	Sky Ridge Medical Center	Urban
Family Health West	Rural	Southeast Colorado Hospital District	Frontier
Keefe Memorial	Frontier	Spanish Peaks Regional Health Center	Frontier
Littleton Adventist Hospital	Urban	St Anthony Central Hospital	Urban
Longmont United Hospital	Urban	St Mary Corwin Hospital	Urban
Medical Center of Aurora	Urban	St Mary's Hospital	Urban
Medical Center of Rockies	Rural	St Vincent General Hospital	Rural
Melissa Memorial	Frontier	Swedish Medical Center	Urban
Memorial Hospital	Urban	The Memorial Hospital	Frontier
Mt San Rafael Hospital	Frontier	University Hospital	Urban
North Colorado Medical Center	Urban	Wray Community District Hospital	Frontier
North Suburban Medical Center	Urban	Yuma Hospital District	Frontier

slide
11

Geographics March 2011	#	%
Frontier	8	21%
Rural	4	11%
Urban	26	68%
Grand Total	38	100%

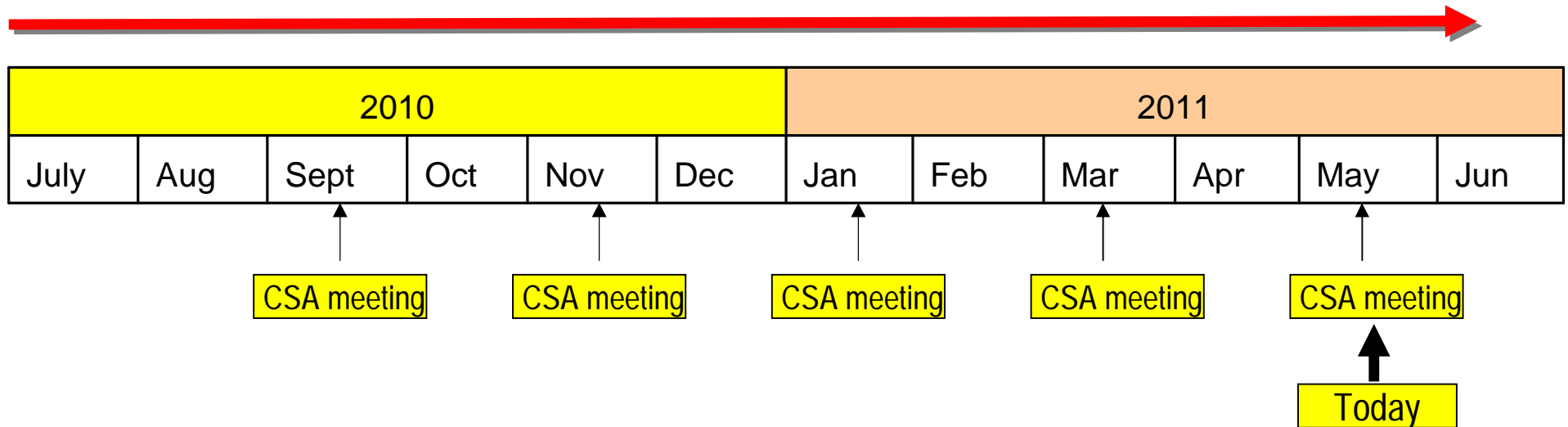


CSA Superuser account
Cases as of 3/17/11: > **18,000 cases**



Timeline

Strategic planning: CSA/CDPHE/AHA – funding, long term planning



Thank you for the continued support

CSA hospitals
&
CSA members

Strategic Planning

- Funding

- We have contacted the following potential funders:

- AHRQ
 - Anschutz Family Foundation
 - Genentech
 - The Colorado Trust
 - The Colorado Health Foundation

- The Board meets weekly to receive updates and to discuss current request