



COLORADO STROKE ALLIANCE

July 15, 2011 update

www.coloradostroke.org

slide
1

If you are using the conference call option, please “mute” your phone.

Please do not put your phone on “hold” during the meeting.

Thank you.

CSA Update

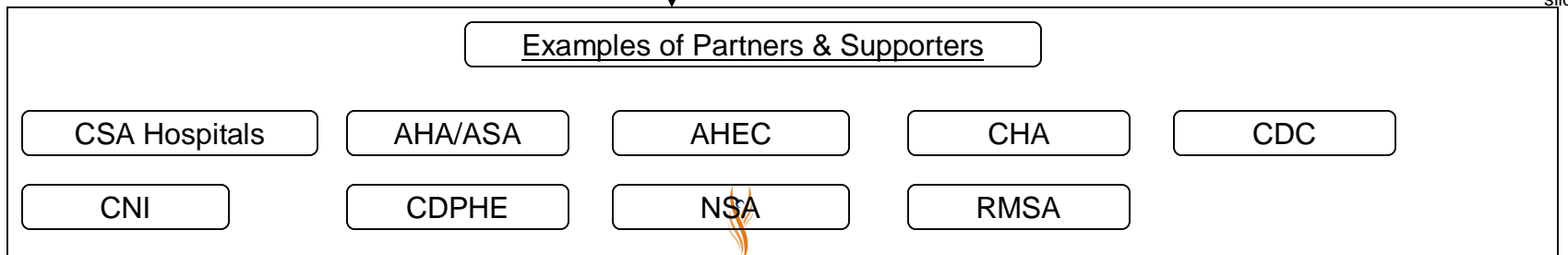
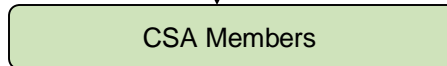
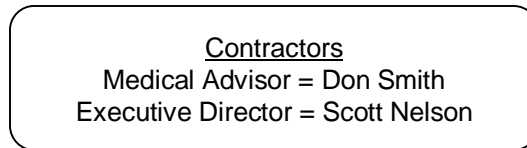
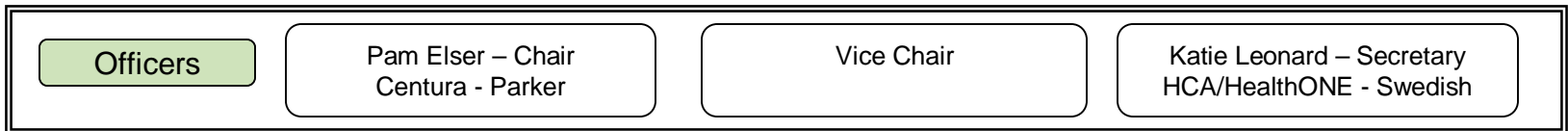
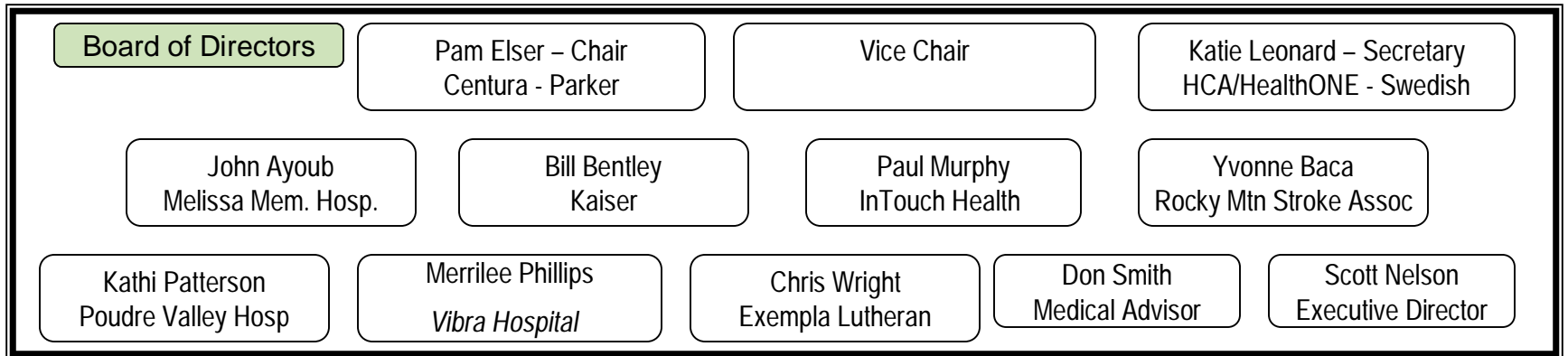
- **CCPD Funding (CDPHE Grant)**
 - July 2010 to June 2011
 - Grant funding from the CDPHE has ended as of June 30, 2011
- **CDPHE Progress Report**
 - Q1 report submitted October 15, 2010
 - Q2 report submitted January 15, 2011
 - Q3 report submitted April 15, 2011,
 - Q4 report submitted July 15, 2011
- **Continue to explore funding options**

Current Operations

July2010-June2011

CSA Organizational Chart March 2011

Max13
Min7



slide
5

Site Visits

- 1 per year
- Deliver GWTG payments
 - CAH: \$525 Basic/JC: \$725
 - *NOTE: GWTG Fee increase 1-1-2011*
- Review trend reports
- General update on CSA Operations
- CSA publications
- **CURRENTLY, THERE ARE NO
PLANNED SITE VISITS UNTIL WE HAVE
FUNDING**

slide
6

Mentoring

- CSA Mentor meeting
 - After CSA meeting
 - 3rd Friday every other month, 915 – 1015 AM
- Rural mentor meeting
 - After CSA mentor meeting
 - 3rd Friday every other month 1015 – 1045 AM
- Next mentor and rural mentor meeting
 - Friday September 16, 2011 (location TBD)
- Next CSA meeting
 - Friday September 16, 2011 from 7:30-9 AM (location TBD)

Data Committee

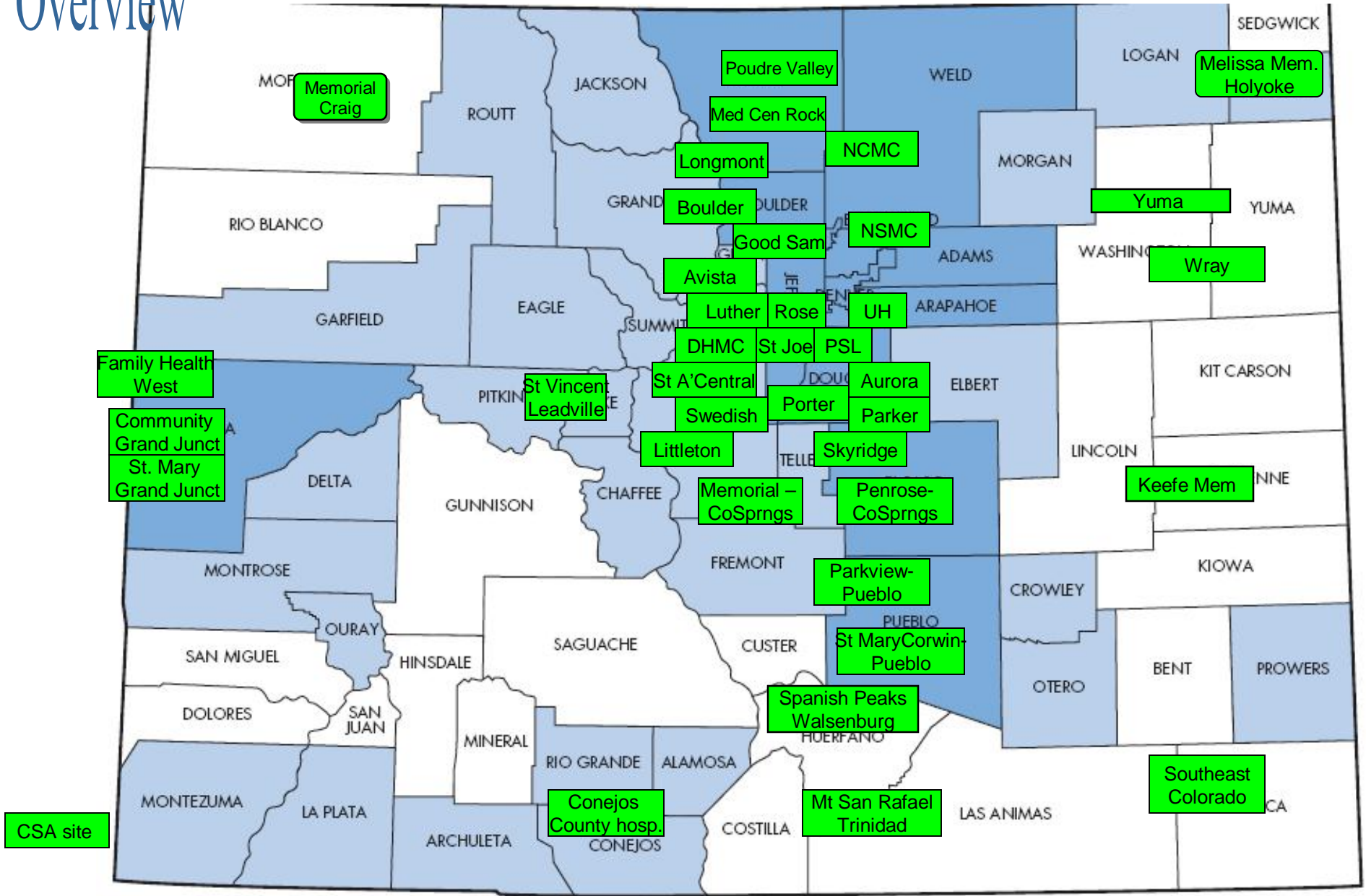
- Meet once a month (as needed)
- Review CSA data
- Discuss potential projects

Papers/publications

- Publications
 - Accepted by JNN
 - “The impact of a statewide stroke quality improvement program”
 - Publication date pending
 - Dr Cumbler In-house stroke project
 - Accepted for publication in *Stroke*
 - Published in December 2010
 - CSA JNN follow-up paper
 - Edits in progress
 - Revision submitted and accepted in December 2010
 - Publication date pending
 - MCS Healthcare Public Relations
 - Contacted CSA to explore potential article on CSA success with statewide efforts
 - Planning in progress
 - Possible publications: *HealthCare Executive, Hospitals and Health Networks and Health Leaders*

slide
9

Overview



This map is only an approximation and is not to scale

July 2011

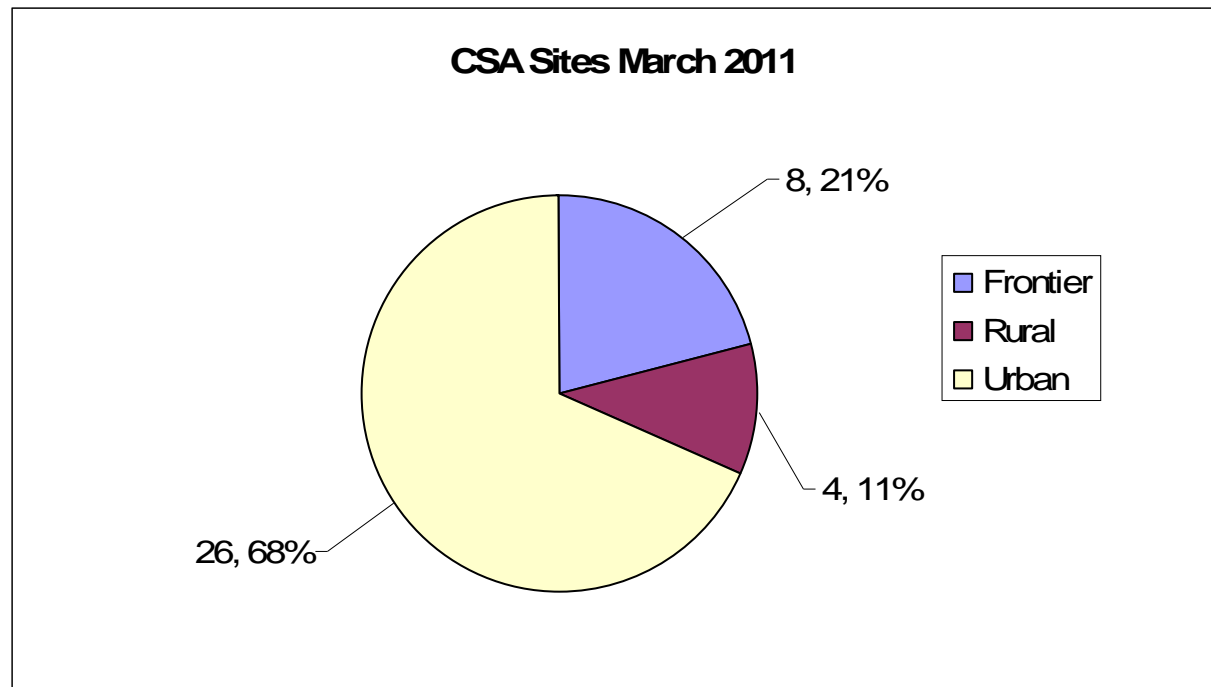


38 CSA Sites June 2011

Hospital	Geographics	Hospital	Geographics
Avista Adventist Hospital	Urban	Parker Adventist Hospital	Urban
Boulder Community Hospital	Urban	Parkview Medical Center	Urban
Community Hospital	Urban	Penrose St Francis Hospital	Urban
Conejos County Hospital	Rural	Porter Adventist Hospital	Urban
Denver Health	Urban	Poudre Valley Hospital	Urban
Exempla Good Samaritan Medical Center	Urban	Presbyterian/St. Luke's Medical Center	Urban
Exempla Lutheran Medical Center	Urban	Rose Medical Center	Urban
Exempla St Joseph's Hospital	Urban	Sky Ridge Medical Center	Urban
Family Health West	Rural	Southeast Colorado Hospital District	Frontier
Keefe Memorial	Frontier	Spanish Peaks Regional Health Center	Frontier
Littleton Adventist Hospital	Urban	St Anthony Central Hospital	Urban
Longmont United Hospital	Urban	St Mary Corwin Hospital	Urban
Medical Center of Aurora	Urban	St Mary's Hospital	Urban
Medical Center of Rockies	Rural	St Vincent General Hospital	Rural
Melissa Memorial	Frontier	Swedish Medical Center	Urban
Memorial Hospital	Urban	The Memorial Hospital	Frontier
Mt San Rafael Hospital	Frontier	University Hospital	Urban
North Colorado Medical Center	Urban	Wray Community District Hospital	Frontier
North Suburban Medical Center	Urban	Yuma Hospital District	Frontier

slide
11

Geographics March 2011	#	%
Frontier	8	21%
Rural	4	11%
Urban	26	68%
Grand Total	38	100%



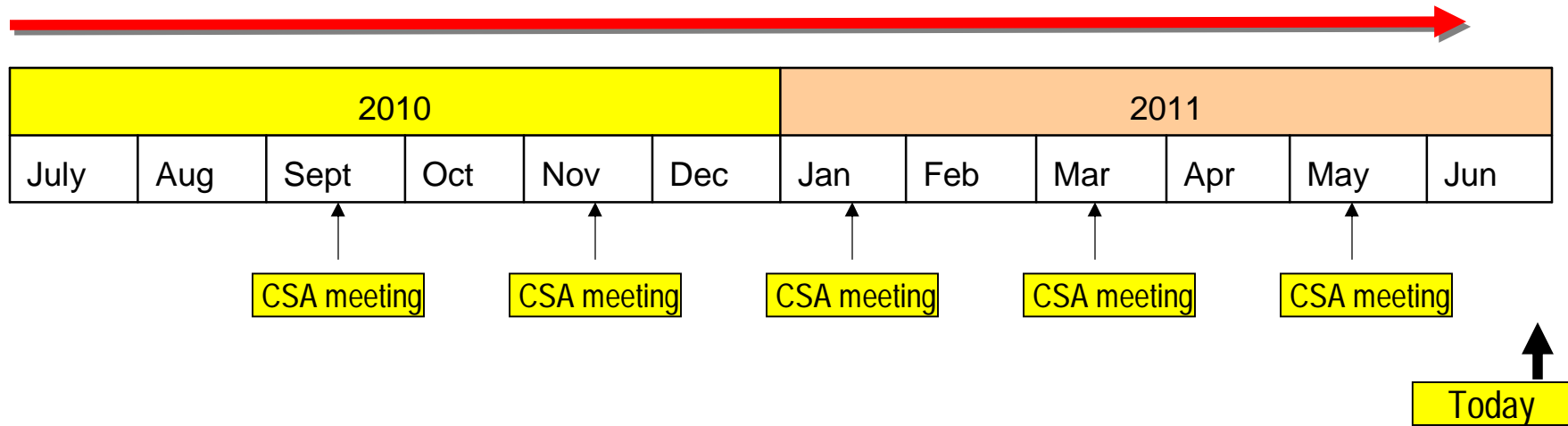
CSA Superuser account
Cases as of 3/17/11: > **18,000 cases**

Hospital Participation

- Letters went to all the participating hospitals along with an updated Letter of Intent to continue participating
- We have received 21 as of July 14, 2011
 - CSA will continue to contact the hospitals that have not yet responded

Timeline

Strategic planning: CSA/CDPHE/AHA – funding, long term planning



The Future of CSA

- We will continue to pursue funding
- We remain in contact with the CDC
- The Board of Directors will remain intact
- The Executive Director will continue to be the point of contact for inquiries and grant applications

Thank you for the continued support

CSA hospitals
&
CSA members

slide
16